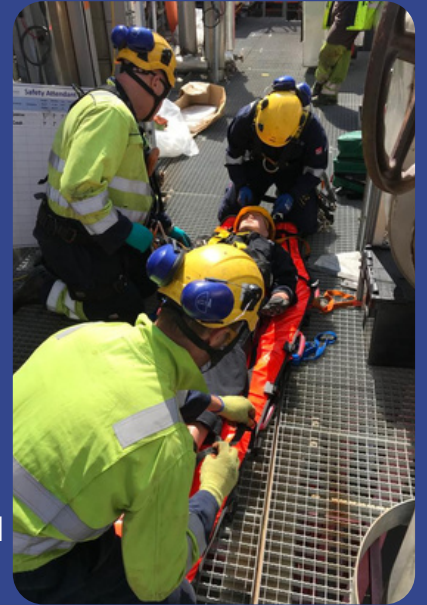
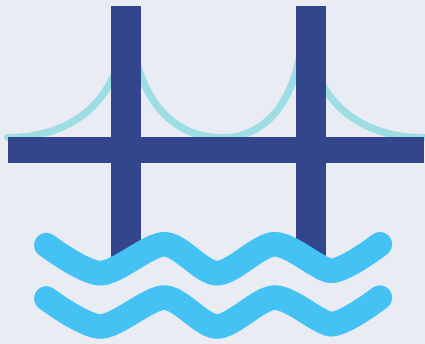


SUTTON BRIDGE POWER GENERATION CASE STUDY



SECTOR: Power Generation
TIMEFRAME: April 16th - 27th May 2020
DURATION: 7 days a week / 11 hours daily

HFR Solutions was recently approached by the Sutton Bridge Power Generation Management team at short notice with a request to provide emergency response cover with advanced rescue and enhanced medical response capabilities, for the planned outage of their 850 MW gas-fired powered station, based in Sutton Bridge.



SOLUTIONS DELIVERED

- On site Emergency Response Team (ERT)
- Reactive response to Confined Space, Advanced First Aid and Work at Height incidents
- Plan and exercise rescue arrangements
- Supporting the SBPG Management Team by completing proactive health and safety surveillance
- Providing tangible safety documentation to support the SBPG safety culture

REQUIREMENT

A risk assessment undertaken by SBPG recognised a requirement to deploy additional full-time emergency response specialists and safety attendants to enhance their on-site provision. With a peak of 150 contractors on site, this helped meet legislative requirements and manage foreseeable risks. The outage period was undertaken during the COVID-19 pandemic, which presented the SBPG Management team with added logistical challenges. This resulted in the project focusing on risk-critical works that could be completed in line with additional COVID controls.

The project's scope accounted for the hazards associated with the complexity of various structures and multiple simultaneous confined space entries and the level of risk mitigation already in place. The SBPG team expected HFR Solutions site-based responders to endure all legislative areas concerning their confined space entry and rescue were addressed, as well as delivering enhanced first aid response and work at height rescue.

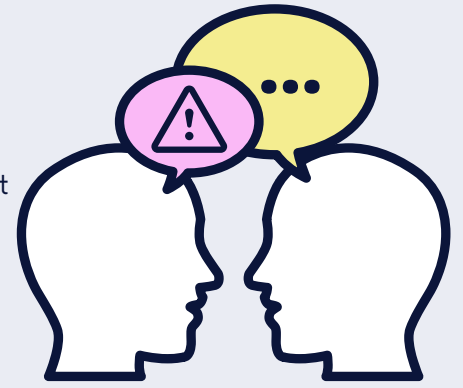


WORKABLE RESCUE PLANS & TESTING CASUALTY EXTRACTION

After visiting the site and reviewing high risk areas, documentation in accordance with Confined Space Regulations 1997 and Work at Height Regulations 2005 were produced. The ERT team executed a simulated exercise based on credible scenarios identified from the risk profile. The scenario focused on a contractor sustaining a leg injury in a confined space at a high level. This tested the team's capability to respond, treat, package, rescue and lower the casualty to ground level safety. Upon completion, a report was produced and a full debrief took place to review the outcome.

OUTCOMES

- Provided the Sutton Bridge team with the assurance that legislative compliance for high-risk activities, such as rescue from confined space and work at height were met.
- Deployed professional rescue teams developed from local authority front line emergency service responders.
- Supported the SBPG SAFE process by completing proactive safety conversations and documented safety audits and inspections.
- Safety attendants working with Sutton Bridge Management Team to ensure site safety procedures are adhered to at all times.



SOLUTION

The successful completion of the 2020 Sutton Bridge Power Station Outage was cast into doubt due to COVID-19. Under normal circumstances, a Power Station Outage demands an effective collaboration between all personnel on site. By deploying HFR Solutions to deliver their emergency response and assist in managing their Outage Safety, SBPG could provide tangible evidence that high levels of safety were maintained.

Our Operational Director Shaun Lyons said:

"We were focused on not just delivering the reactive rescue response requirements, but also providing proactive measures including positive safety conversations to drive the safety culture as well as undertaking daily site safety audits. Our ability to mobilise a highly experienced team of rescue technicians at short notice highlights our capability to deliver agile and effectively resourced response team solutions."

HSE Manager Peter Rush commented:

"Due to past challenges regarding emergency response, the provision of emergency response specialists was critical to the SBPG team. HFR Solutions delivered this support, along with the competency, experience and practical expertise to challenge varying aspects of our site's safety. This proved to be invaluable!"

WHO ARE WE?

HFR Solutions are an ISO-accredited Community Interest Company founded in 2012 who specialise in emergency response and workplace safety. We work closely with organisations to help better #PlanPrepareRespond in an emergency, comply with legislation and ensure employees hold the competency to maintain a safe working environment. This is achieved through the delivery of emergency response and management solutions, safety-team deployment, as well as confined space, fire safety, advanced first aid and work at height workplace safety solutions.